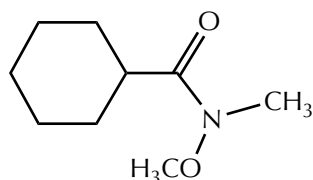


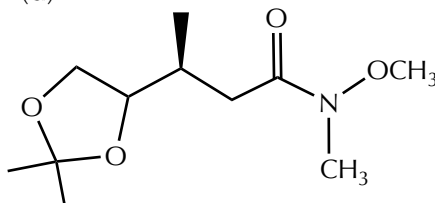
Problem of the Day 17
CH 13
Question 13.

Proper classification and identification are key aspects of problem-solving. The Weinreb amide can be particularly easy to miss when you are identifying acylation reactions. How many examples involving the Weinreb amide can you identify simply by looking at the given information for the Practice Questions 13.30-13.37?

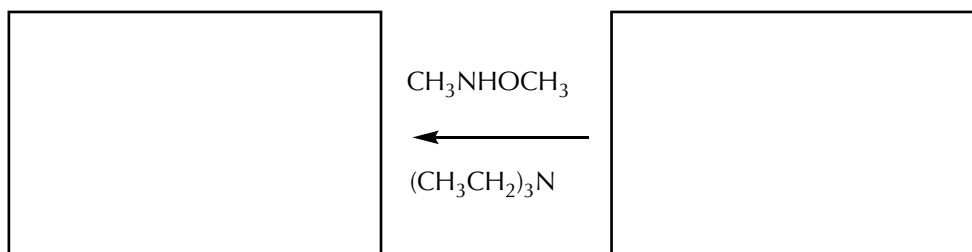
13.30 (b)



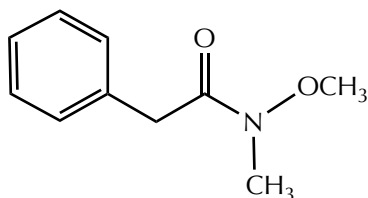
(d)



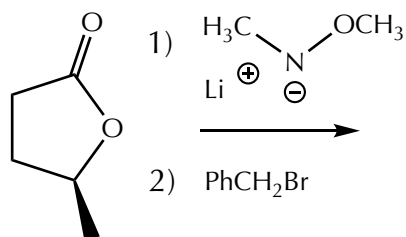
13.31



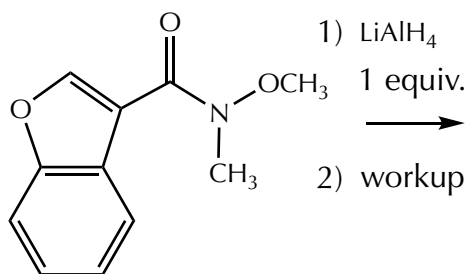
13.33



13.35 (c)



(f)



13.37 A thioester derivative was developed in 1971 that gives the same outcome as the **Weinreb amide**: acylation reactions using Grignard reagents that result in a ketone. Provide a mechanistic interpretation for how this thioester might work to not result in overaddition.