

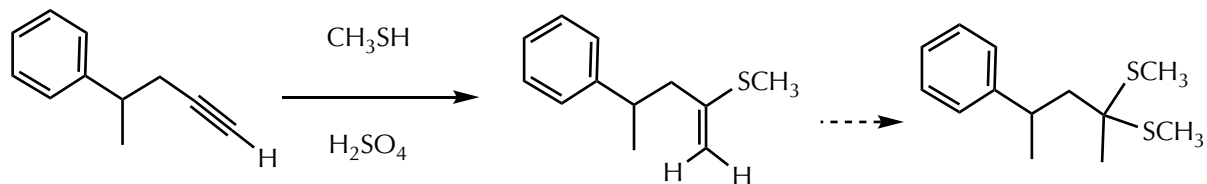
Problem of the Day 32

Section 8.3

Question 8.15

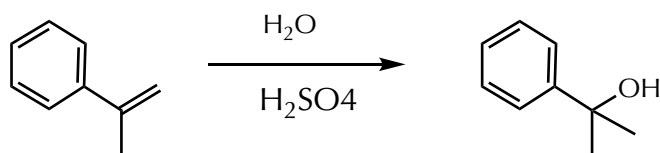
Swap the reaction conditions for parts (a) and (b) and determine the expected outcome.
Swap the reaction conditions for parts (c) and (d) and determine the expected outcome.
Swap the reaction conditions for parts (e) and (f) and determine the expected outcome.

(a)

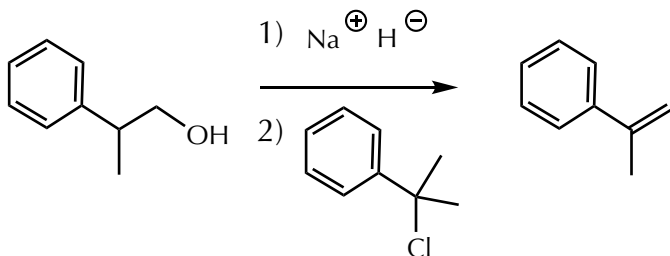


if 2 equivalents

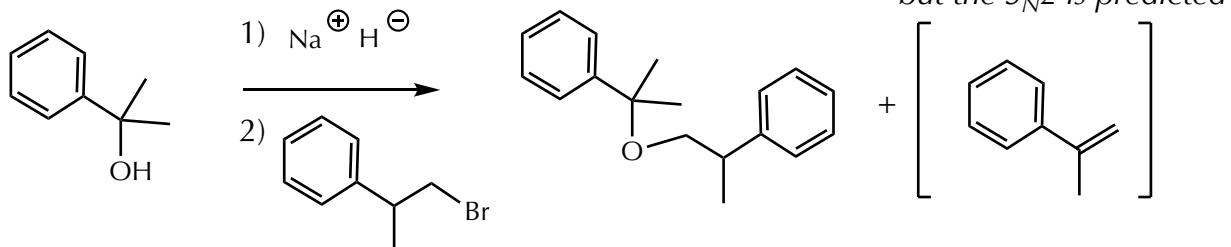
(b)



(c)

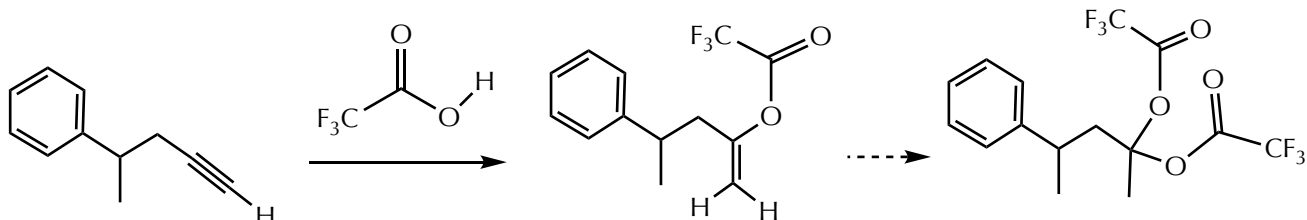


(d)



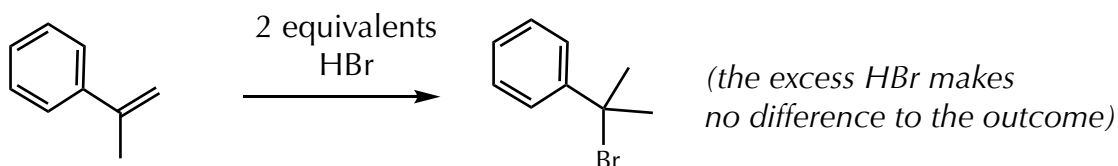
the hindered O- might well do lots of E, but the S_N2 is predicted

(e)



if 2 equivalents

(f)



(the excess HBr makes no difference to the outcome)