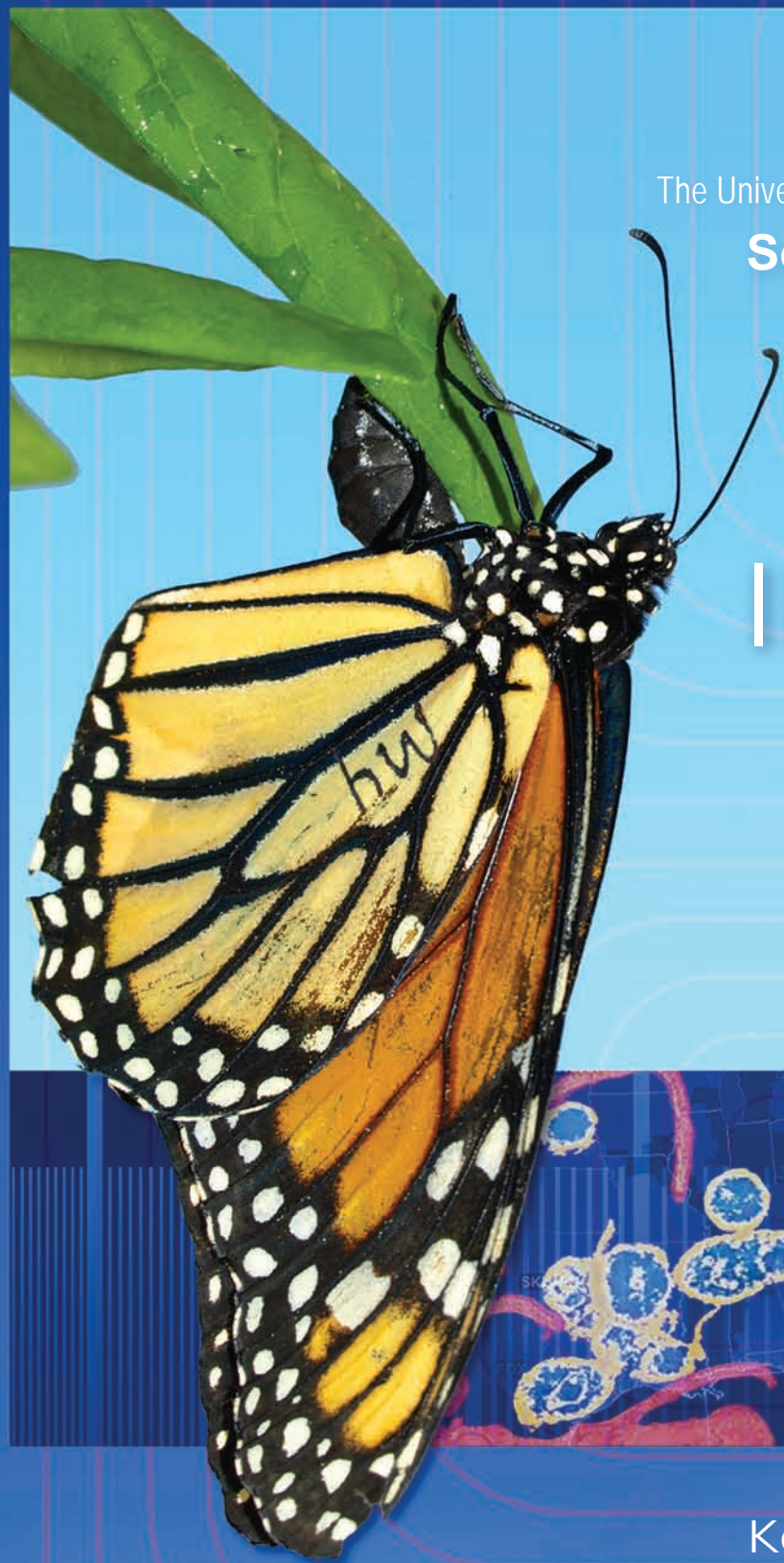


The University of Michigan Department of Ecology and Evolutionary Biology presents the  
**Seventh Early Career Scientists Symposium**

# INFECTIOUS DISEASE ACROSS SCALES: *the complexity of pathogen ecology and evolution*



Saturday, April 16, 2011  
8:50 a.m. – 6 p.m.  
University of Michigan  
Ross School of Business  
Blau Auditorium

*Made possible by the generous support  
of alumna Dr. Nancy Williams-Walls*

*Photography credits:  
butterfly-Jaap de Roode; map-CDC;  
measles budding off a host cell; mouse-  
Amber Smith; basal structure-Nature  
Reviews Microbiology; mosquito-Sinclair  
Stammers; bat-Ivan Kuzmin, CDC*

Further information and  
complimentary registration at:  
[sitemaker.umich.edu/ecss2011/home](http://sitemaker.umich.edu/ecss2011/home)

Keynote speaker:

**Steven Frank**  
University of California at Irvine  
*Three unsolved puzzles in infectious disease*

Featuring:

**Caroline Buckee**  
Harvard School of Public Health  
*The effects of cross-immunity and  
competition on meningococcal  
evolution*

**Silvie Huijben**  
The Pennsylvania State University  
*The ecology and evolution of resistant  
malaria parasites*

**David Kennedy**  
University of Chicago  
*The role of multilevel selection in the  
maintenance of viral genetic  
diversity*

**Britt Koskella**  
University of Oxford  
*Local biotic environment shapes the  
spatial scale of bacteriophage  
adaptation to bacteria*

**Thierry Lefèvre**  
Emory University  
*The role of host behavior in  
host-parasite interactions and  
disease dynamics*

**Laura Pollitt**  
University of Edinburgh  
*The evolutionary ecology of  
transmission strategies:  
from hosts to vectors*

**Amber Smith**  
Los Alamos National Laboratory  
*Bacterial coinfections with influenza:  
quantitative data and modeling*

**Daniel Streicker**  
University of Georgia  
*Effects of host species identity on the  
epidemiology and evolution of bat rabies*