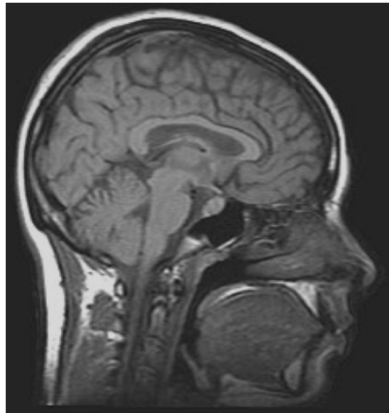


What does it mean to be a modern human?

Evolution and Human Adaptation Series, Winter 2014

Life History • Reproduction • Metabolism • Disease
Behavior • Cognition • Genetics • Paleontology



Tuesdays at 4 pm • 4448 East Hall

- 1/21/14 **Alison Brooks**, George Washington U.: origins of modern human behavior
- 1/28/14 **Herman Pontzer**, Hunter College/CUNY: primate and human energetics
- 2/4/14 **Tom Schoenemann**, Indiana U.: primate brain evolution
- 2/18/14 **Peter Katzmarzyk**, Pennington Biomed. Research Ctr: the obesity epidemic
- 2/25/14 **Robin Bernstein**, U. of Colorado: lactation, infection, and infant growth
- 3/11/14 **Chris Kuzawa**, Northwestern U.: perinatal programming, health and disease
- 3/25/14 **Mike Power**, Amer. College of Obstetrics & Gynecology: evolution of obesity
- 4/1/14 **Jeff Kidd**, U. of Michigan Medical School: modern human genetics
- 4/8/14 **Grazyna Jasienska**, Jagiellonian U.: reproduction, energetics, & life history
- 4/15/14 **Barry Bogin**, Loughborough U.: nutrition and childhood growth
- 4/22/14 **Milford Wolpoff**, U. of Michigan: origins of modern humans

Co-sponsored by the Evolution and Human Adaptation Program, the Department of Anthropology, LS&A, and the Research Center for Group Dynamics at ISR.

 THE DEPARTMENT OF
ANTHROPOLOGY

<http://www.rcgd.isr.umich.edu/ehap/>
To receive weekly updates, email
EHAP@umich.edu