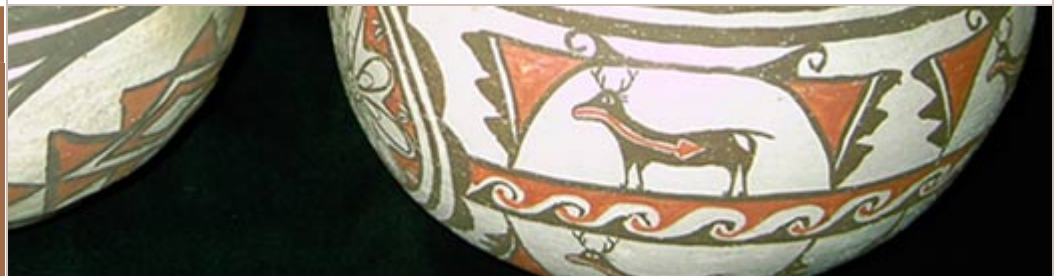




Welcome to UMMA
The Museum of Anthropology is an international leader in anthropological archaeology research and student training. Our world class research collections include materials from all continental areas, with particular strengths in eastern North America and Asia. The collections support undergraduate and graduate education and a portion are displayed in the University Exhibit Museum. This website contains information about faculty research, the Museum's organization, and selected images from our collections.



[SEARCH](#) | [SITEMAP](#) | [MUSEUM DIRECTORY](#) | [CONTACT US](#)

[UM Archaeological Analyses Support Piciris Pueblo Resource Claim](#)

[Museum Curators receive awards](#)

Three curators receive awards from National Associations and University peers.

<http://www.lsa.umich.edu/umma/publications/list/>

Memoir 38

Plants of the Petén Itza' Maya: Plantas de los maya itza' del Petén,
by *Scott Atran, Ximena Loís, and Edilberto Ucan Ek'*



The Itza' Maya of the Petén in Guatemala preside over a unique rainforest biosphere in danger of disappearing. Equally at risk is their own botanical knowledge—from their own taxonomy to medicinal uses. This is an invaluable reference set for botanists, historians, anthropologists, linguists, ecologists, historians and all medical fields. The book contains a history of the Petén Itza' Maya, explanation of Itza' taxonomy, tables and keys to plant usage, common names in English, Spanish and several indigenous languages, and much more. The accompanying CD-ROM presents this information in a searchable database, along with hundreds of color photos of plants. CD-ROM is Mac/PC compatible. [2004. 248 pp, plus CD-ROM, \$50. ISBN 0-915703-55-6]